



## Household Income in the RSCCD Service Area

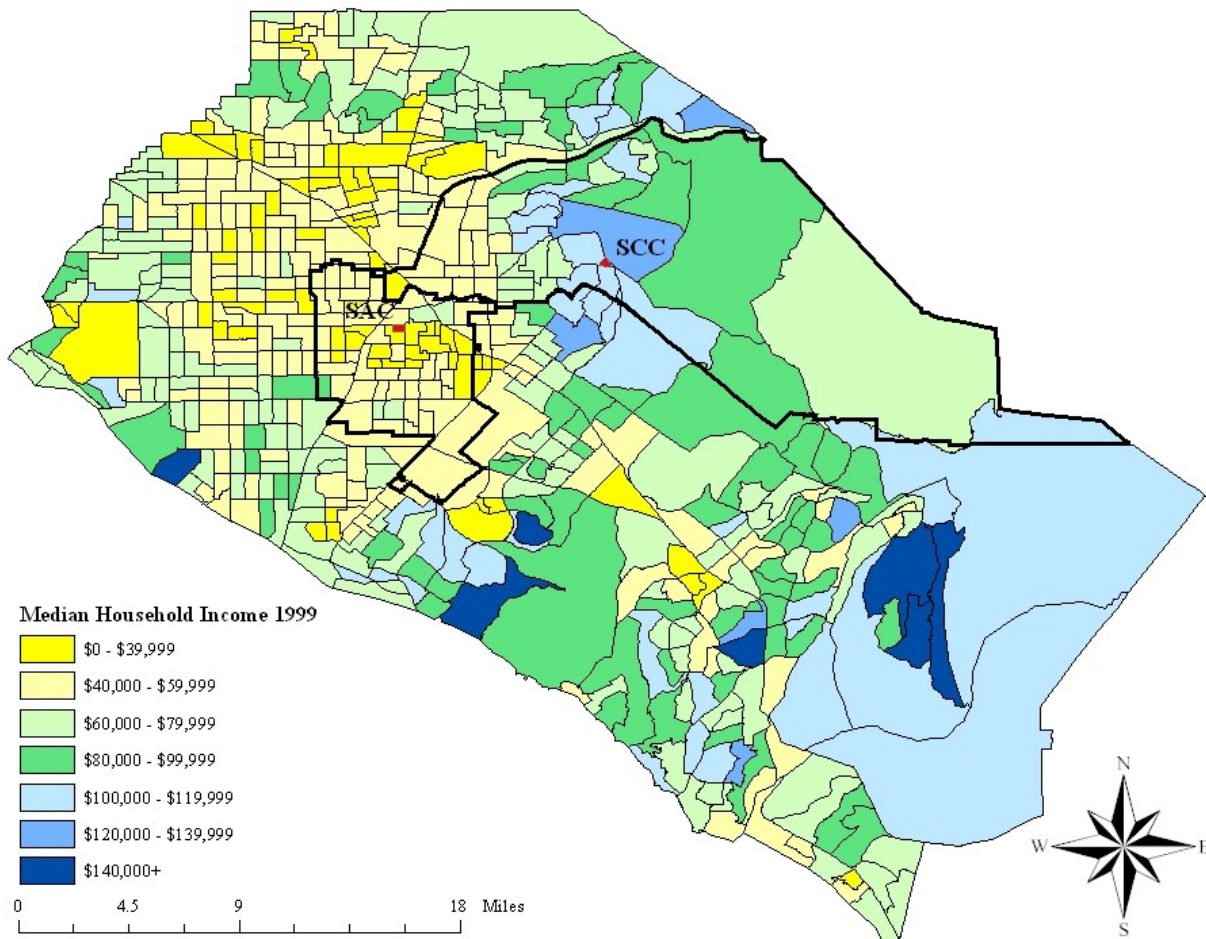
Results from the 2000 U.S. Census

September 2003

In Spring 2003, the RSCCD Research Department published a comprehensive report on the findings of the 2000 U.S. Census as it relates to our District and community. From this wealth of information, key areas were identified as being of particular interest to RSCCD for purposes of program planning. Those areas are: educational attainment, income, and transportation. This is the second “factsheet” in a series that will highlight these areas of special interest in the 2000 census data.

RSCCD encompasses 122 census tracts, each home to an average of 5,676 residents, and 1,571 housing units. Median annual household income in 1999 (April 2000 Census) within the RSCCD boundaries was \$52,400 (\$44,300 for SAC service area and \$67,400 for SCC service area), compared to \$58,820 in all of Orange County and \$47,493 in California.

### Median Household Income in 1999 Orange County and RSCCD



**1999 Household Income Distribution  
RSCCD Service Area, Orange County and California**

	Service Area			Orange Co.	California
	SAC Area	SCC Area	RSCCD		
<b>Household Income in 1999</b>					
Less than \$15,000	11%	7%	9%	9%	14%
\$15,000 to \$29,999	19%	11%	16%	14%	18%
\$30,000 to \$44,999	20%	14%	18%	15%	16%
\$45,000 to \$59,999	15%	12%	15%	14%	14%
\$60,000 to \$74,999	12%	12%	12%	12%	11%
\$75,000 to \$99,999	11%	16%	13%	14%	12%
\$100,000 to \$124,999	6%	10%	8%	9%	7%
\$125,000 to \$149,999	2%	6%	4%	5%	4%
\$150,000 or more	2%	12%	6%	10%	7%
<b>Total Households</b>	<b>88,199</b>	<b>63,291</b>	<b>151,490</b>	<b>936,154</b>	<b>11,512,020</b>
<b>Median Household Income</b>	<b>\$44,300</b>	<b>\$67,400</b>	<b>\$52,400</b>	<b>\$58,820</b>	<b>\$47,493</b>

- 50% of the SAC service area households had incomes of below \$45,000, versus 32% in the SCC service area, 38% in Orange County, and 48% in California.
- The overall household size in the SAC service area is 4.4 people per household. This household size is very large compared to 3.0 in the SCC service area and Orange County, and 2.9 in California.
- The average income per person (per capita income) was \$12,744 in the SAC service area, \$25,292 in the SCC service area, \$25,826 in Orange County, and \$22,711 in California. (See [http://www.rsccd.org/research/Per\\_Capita\\_Income.htm](http://www.rsccd.org/research/Per_Capita_Income.htm) ).
- In the SAC service area 19% of the population had 1999 incomes below the level defined as poverty; 8% in the SCC service area, 10% in Orange County, and 14% in California.
- 51% of the SAC service area households are owner occupied, versus 70% in the SCC area, 61% in Orange County, and 57% in California.

RSCCD's continued efforts to assist low income students with the challenges they face, both in and out of the campus setting, make SAC and SCC integral parts of the local community. Financial aid for education is only one facet of the effort, which also includes subsidized on-campus child care, tutoring, health services, counseling, career and life planning, GED preparation, and rideshare services, as well as other programs to help overcome limited academic preparation and language skills. These services and programs (and more) are available to help all students, but are especially valuable for low income students.