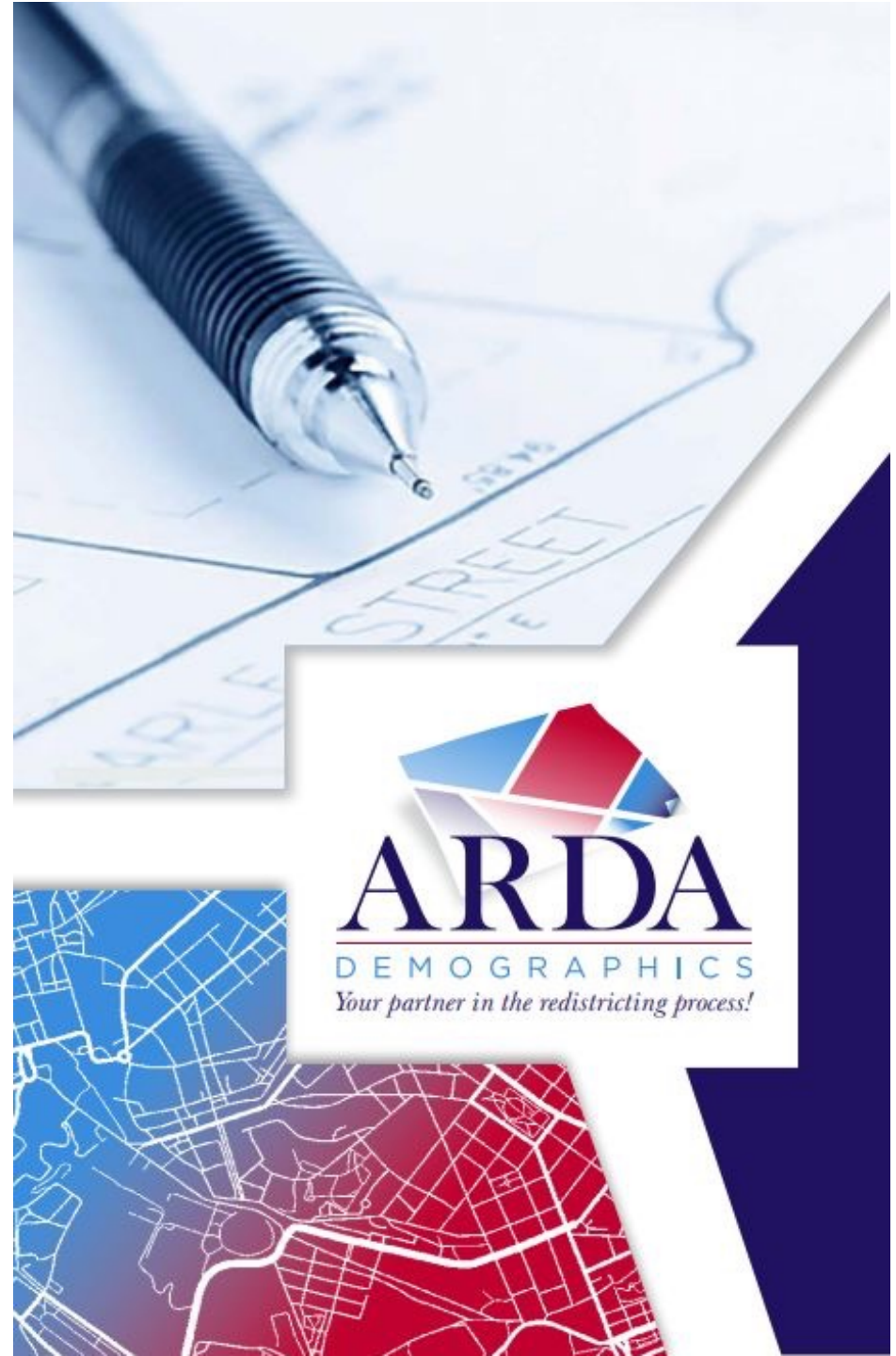
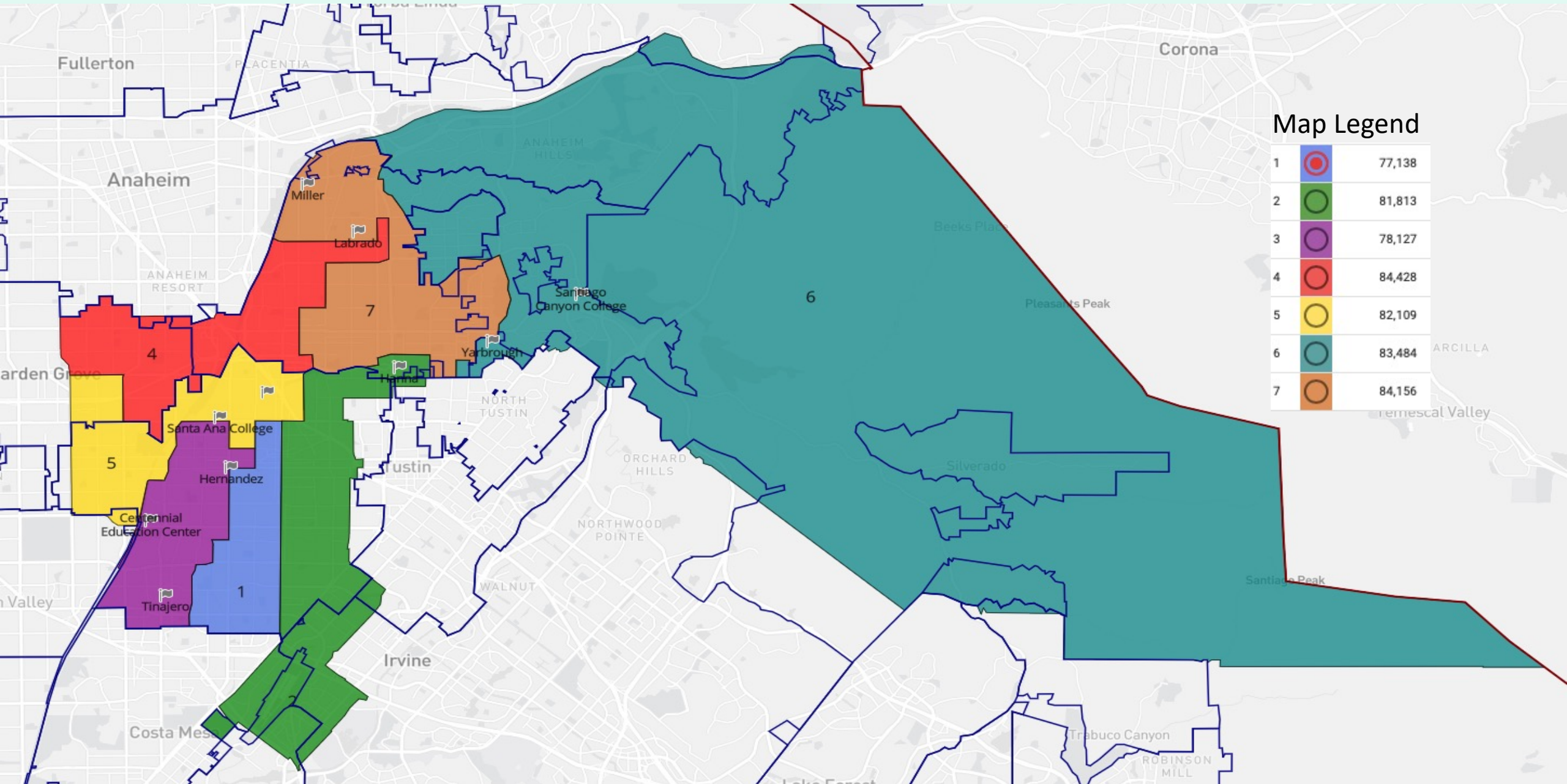


# RSCCD PROPOSALS AND DEMOGRAPHIC DATA

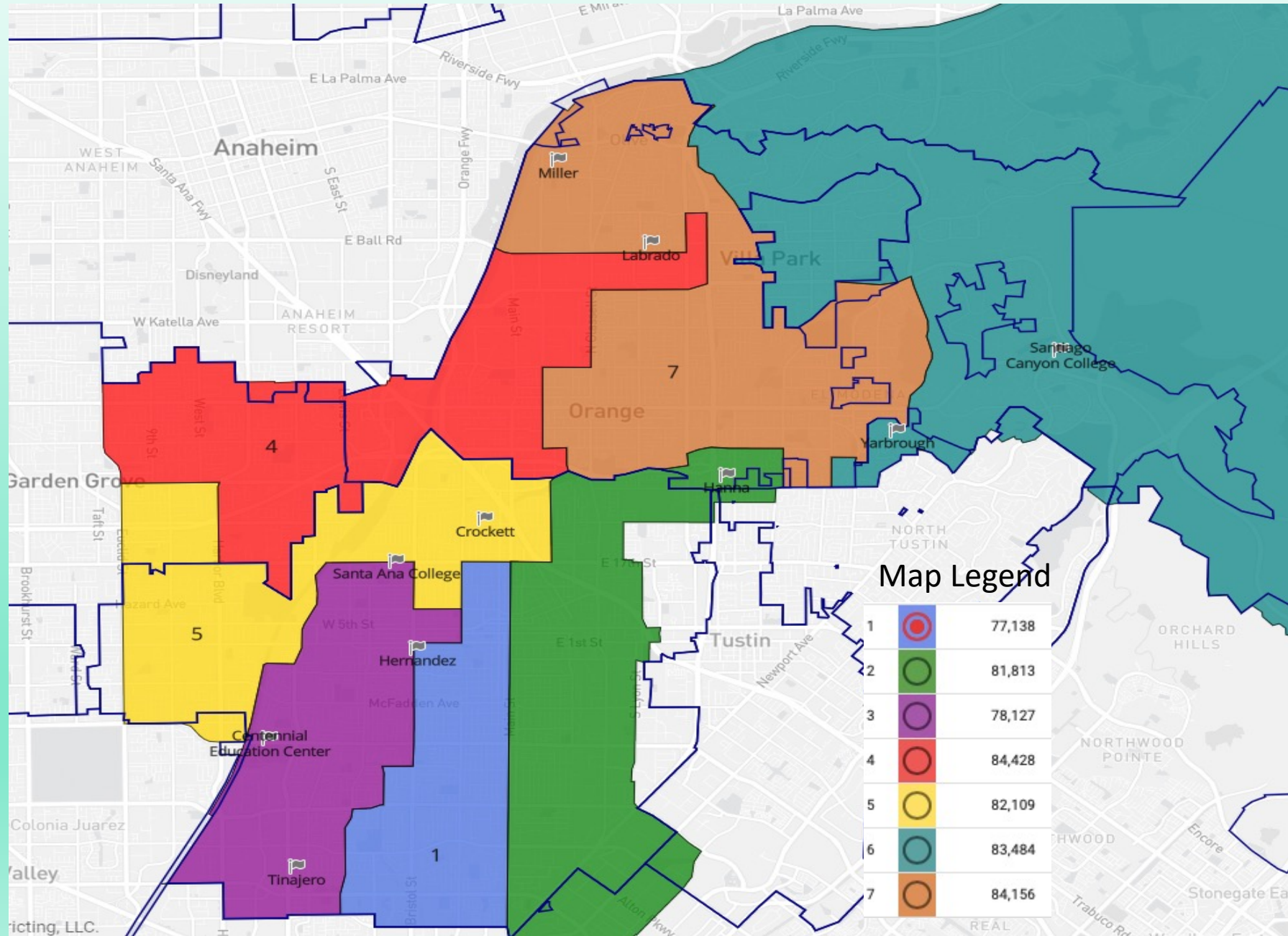
ARDA Demographics



# CURRENT BOUNDARIES



# CURRENT BOUNDARIES



# RSCCD Trustee Area Current Demographics

**Population 571,255**

**Median 81,608**

**Deviation 9.0%**

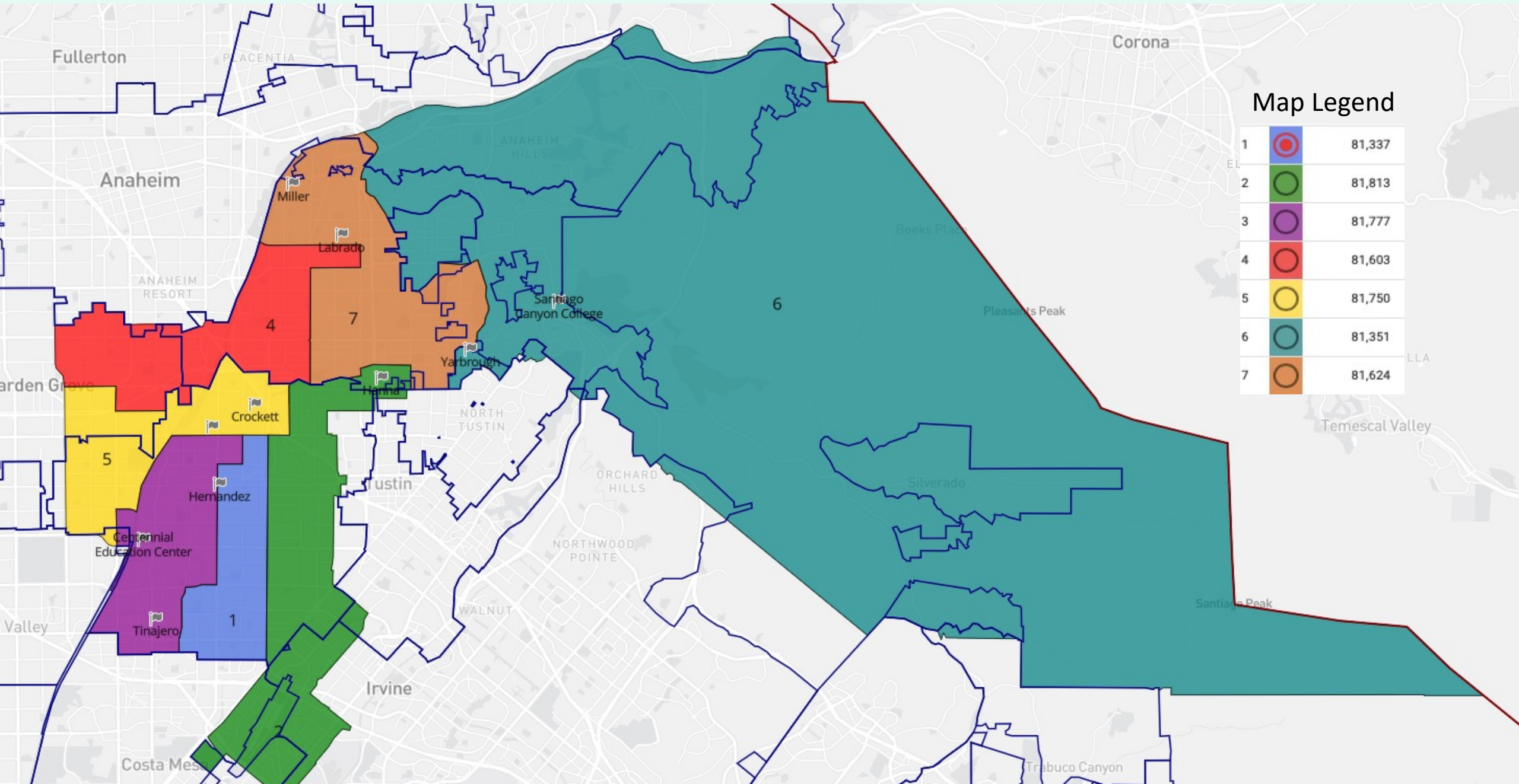
Trustee Area	TA 1		TA 2		TA 3		TA 4		TA 5		TA 6		TA 7	
<b>Population*</b>	77,138		81,813		78,127		84,428		82,109		83,484		84,156	
<b>Population Variance</b>	-5.5%		-0.3%		-4.3%		3.5%		0.6%		2.3%		3.1%	
<b>CVAP**</b>	39,994		42,770		37,004		52,851		47,127		62,023		56,424	
<b>TP and CVAP</b>	TP	CVAP	TP	CVAP	TP	CVAP	TP	CVAP	TP	CVAP	TP	CVAP	TP	CVAP
<b>Hispanic</b>	80.1%	68.9%	74.3%	56.3%	82.8%	71.2%	54.2%	43.0%	60.7%	48.8%	18.1%	15.2%	43.7%	28.3%
<b>White</b>	8.7%	17.3%	14.6%	29.8%	5.4%	12.0%	16.9%	28.1%	10.2%	15.9%	53.9%	62.9%	39.8%	57.4%
<b>Asian</b>	7.7%	10.9%	7.4%	9.8%	8.7%	13.3%	24.6%	25.1%	25.9%	32.7%	19.7%	17.9%	10.8%	11.1%
<b>African American</b>	1.1%	0.9%	1.2%	2.6%	1.2%	2.2%	1.4%	2.0%	1.0%	0.8%	1.2%	1.9%	1.4%	1.1%
<b>Native American</b>	0.2%	0.3%	0.2%	0.4%	0.2%	0.4%	0.2%	0.3%	0.2%	0.1%	0.1%	0.1%	0.2%	0.2%
<b>Pacific Islander</b>	0.2%	0.7%	0.2%	0.2%	0.2%	0.2%	0.3%	0.3%	0.3%	0.4%	0.3%	0.1%	0.3%	0.3%
<b>Other Race</b>	0.3%	0.2%	0.3%	0.3%	0.3%	0.2%	0.3%	0.2%	0.4%	0.3%	0.6%	0.2%	0.5%	0.3%
<b>Two or More Races</b>	1.6%	0.7%	1.9%	0.9%	1.3%	0.5%	2.0%	1.0%	1.5%	0.9%	6.1%	1.8%	3.1%	1.2%

\* Source: Census 2020 P.L. 94-171 Redistricting Data Summary Files \*\* Source: American Community Survey, 2015-2019 Data

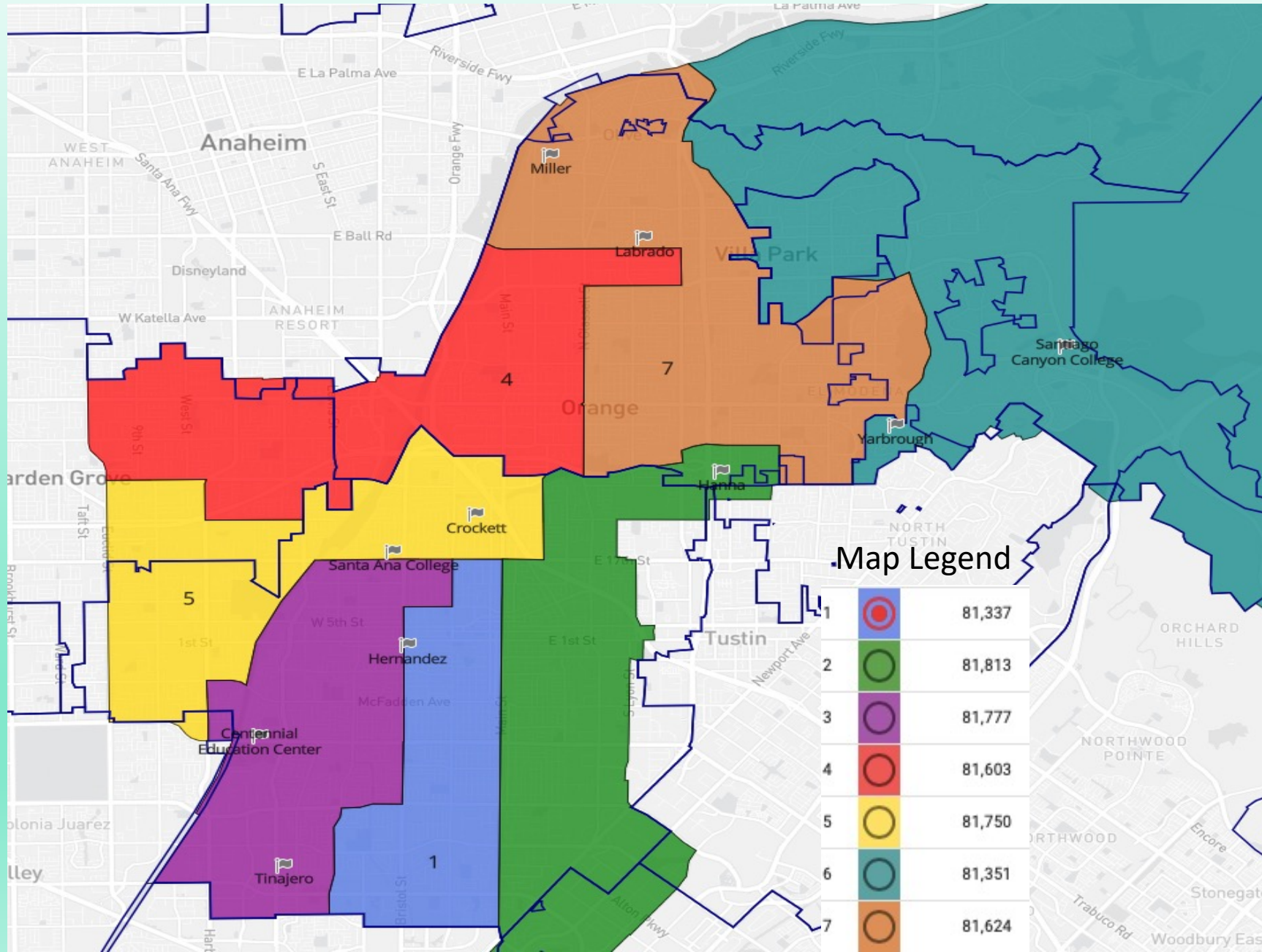
# RSCCD TRUSTEE AREA PLAN 1

## “Right Sizing”

# RSCCD TRUSTEE AREA PLAN 1



# RSCCD TRUSTEE AREA PLAN 1



# RSCCD Trustee Area Plan 1 Demographics

**Population 571,255**

**Median 81,608**

**Deviation 0.6%**

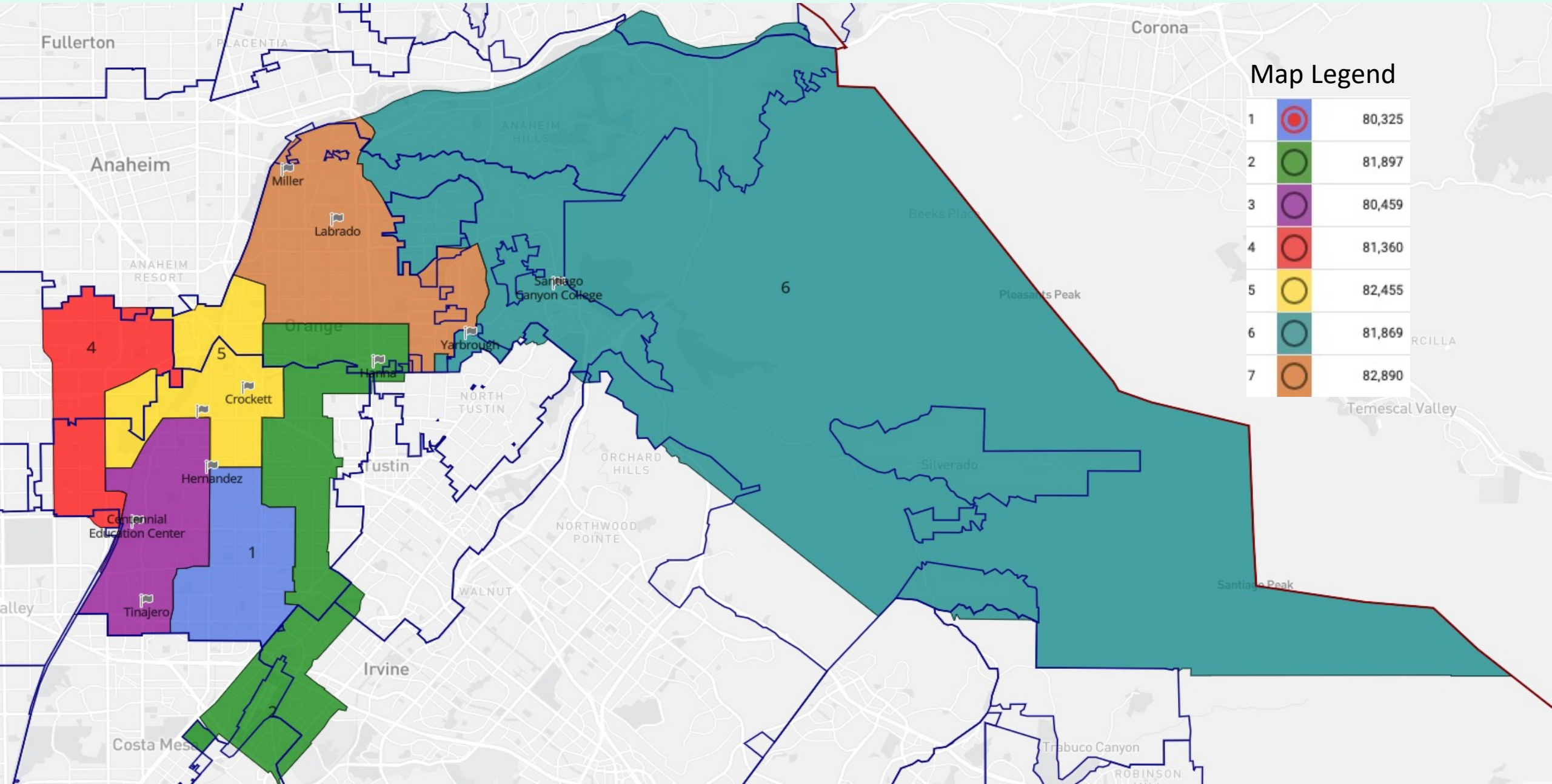
Trustee Area	TA 1		TA 2		TA 3		TA 4		TA 5		TA 6		TA 7	
<b>Population*</b>	81,337		81,813		81,777		81,603		81,750		81,351		81,624	
<b>Population Variance</b>	-0.3%		0.3%		0.2%		0.0%		0.2%		-0.3%		0.1%	
<b>CVAP**</b>	41,629		42,771		40,384		52,621		46,539		60,787		53,463	
<b>TP and CVAP</b>	TP	CVAP	TP	CVAP	TP	CVAP	TP	CVAP	TP	CVAP	TP	CVAP	TP	CVAP
<b>Hispanic</b>	79.5%	67.8%	74.3%	56.3%	82.3%	70.9%	51.9%	41.0%	60.3%	48.2%	17.1%	14.7%	44.7%	28.5%
<b>White</b>	9.3%	18.0%	14.6%	29.8%	5.1%	11.8%	19.8%	30.8%	9.7%	15.7%	54.5%	63.2%	39.0%	57.9%
<b>Asian</b>	7.6%	10.9%	7.4%	9.8%	8.4%	14.4%	24.5%	24.2%	27.4%	33.6%	19.7%	18.2%	11.1%	10.4%
<b>African American</b>	1.1%	1.2%	1.2%	2.6%	1.2%	1.8%	1.4%	1.8%	1.0%	0.9%	1.2%	1.8%	1.4%	1.2%
<b>Native American</b>	0.2%	0.3%	0.2%	0.3%	0.2%	0.3%	0.1%	0.3%	0.2%	0.1%	0.1%	0.1%	0.1%	0.2%
<b>Pacific Islander</b>	0.2%	0.8%	0.2%	0.2%	0.2%	0.1%	0.3%	0.4%	0.3%	0.4%	0.3%	0.1%	0.3%	0.3%
<b>Other Race</b>	0.3%	0.2%	0.3%	0.3%	0.3%	0.2%	0.3%	0.3%	0.4%	0.3%	0.6%	0.3%	0.5%	0.3%
<b>Two or More Races</b>	1.6%	0.7%	1.8%	0.8%	1.3%	0.5%	2.0%	1.1%	1.5%	0.8%	6.3%	1.8%	3.2%	1.3%

\* Source: Census 2020 P.L. 94-171 Redistricting Data Summary Files \*\* Source: American Community Survey, 2015-2019 Data

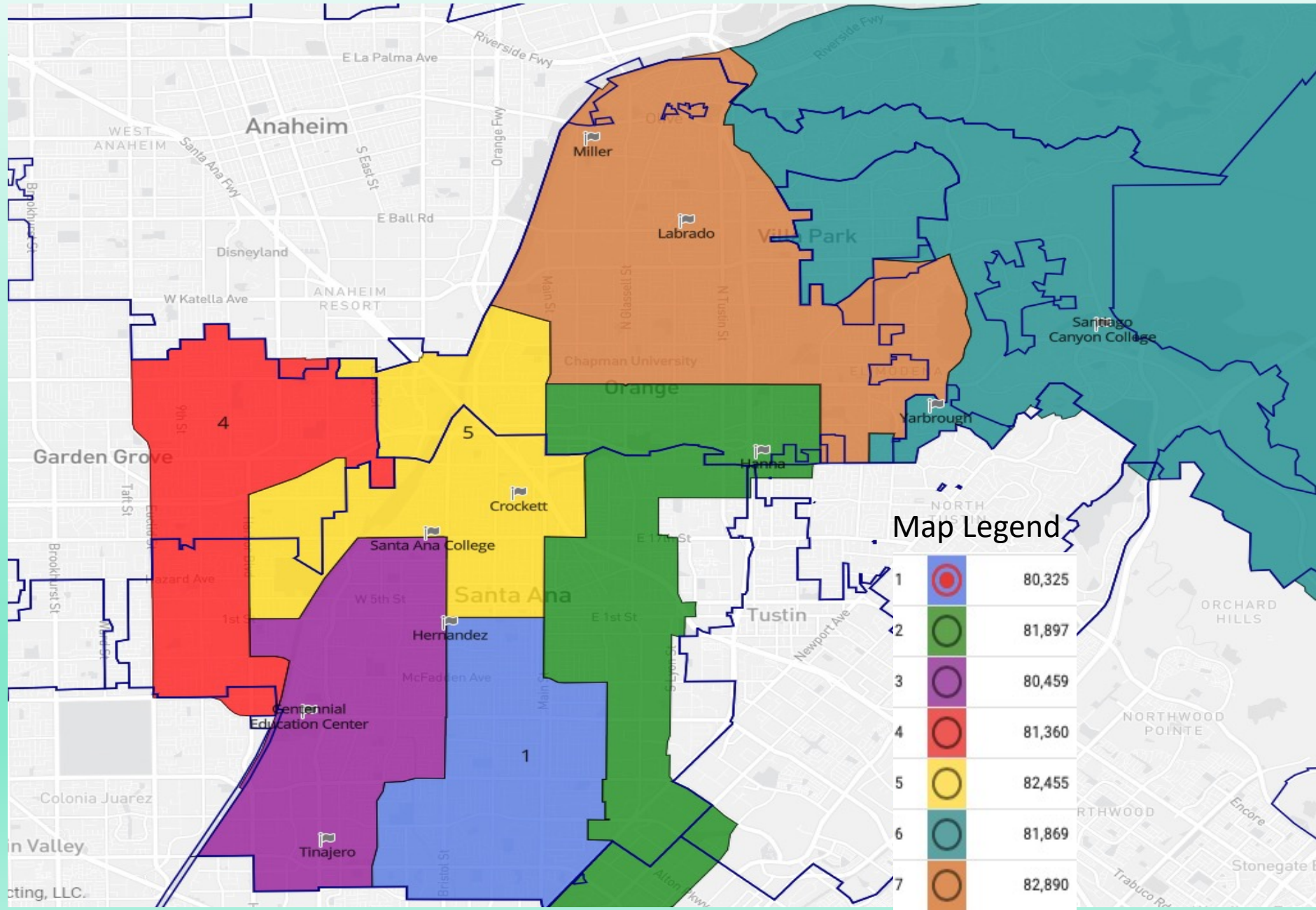


**RSCCD TRUSTEE AREA PLAN 2A  
ASIAN PLURALITY PLAN**

# RSCCD TRUSTEE AREA PLAN 2A



# RSCCD TRUSTEE AREA PLAN 2A



# RSCCD Trustee Area Plan 2A Demographics

**Population 571,255**

**Median 81,608**

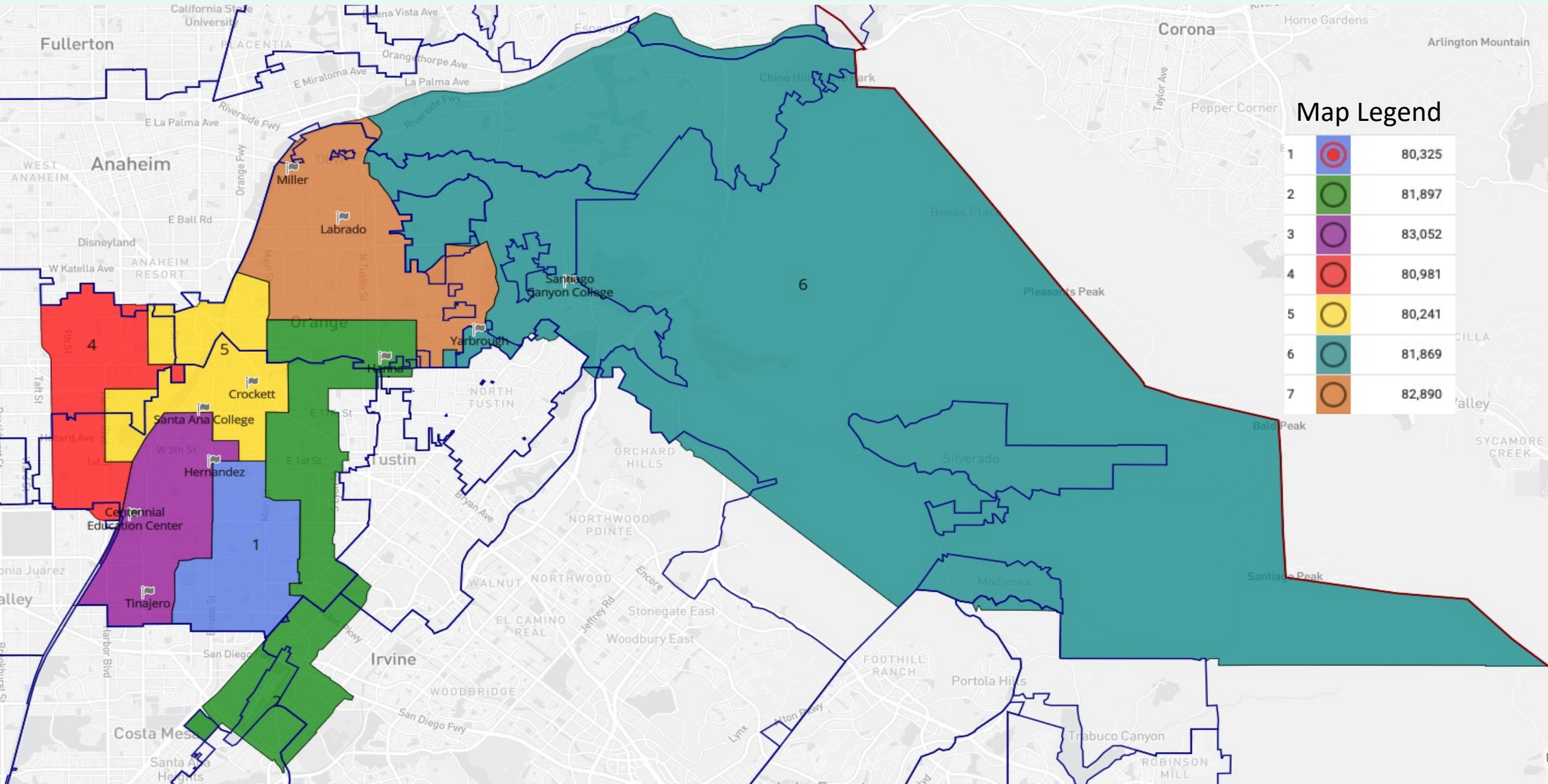
**Deviation 3.2%**

Trustee Area	TA 1		TA 2		TA 3		TA 4		TA 5		TA 6		TA 7	
<b>Population*</b>	80,325		81,897		80,459		81,360		82,455		81,869		82,890	
<b>Population Variance</b>	-1.6%		0.4%		-1.4%		-0.3%		1.0%		0.3%		1.6%	
<b>CVAP**</b>	43,643		45,320		38,340		49,912		46,805		61,149		53,025	
<b>TP and CVAP</b>	TP	CVAP	TP	CVAP	TP	CVAP	TP	CVAP	TP	CVAP	TP	CVAP	TP	CVAP
<b>Hispanic</b>	80.6%	70.7%	65.3%	45.8%	83.6%	72.2%	49.8%	39.5%	67.0%	53.7%	17.2%	14.8%	47.5%	30.0%
<b>White</b>	8.7%	16.3%	21.7%	39.5%	4.4%	10.4%	10.6%	17.3%	15.0%	25.8%	54.5%	63.2%	36.6%	55.7%
<b>Asian</b>	7.6%	10.2%	8.4%	10.3%	8.9%	14.2%	36.9%	40.7%	13.7%	9.5%	20.2%	18.1%	10.4%	6.9%
<b>African American</b>	1.0%	0.9%	1.2%	2.5%	1.1%	1.9%	0.9%	0.8%	1.5%	2.1%	1.2%	1.8%	1.4%	1.3%
<b>Native American</b>	0.2%	0.2%	0.2%	0.4%	0.2%	0.2%	0.1%	0.2%	0.2%	0.2%	0.1%	0.1%	0.1%	0.1%
<b>Pacific Islander</b>	0.2%	0.7%	0.2%	0.3%	0.2%	0.2%	0.3%	0.2%	0.3%	0.4%	0.3%	0.1%	0.3%	0.4%
<b>Other Race</b>	0.3%	0.2%	0.3%	0.4%	0.3%	0.2%	0.3%	0.4%	0.4%	0.2%	0.6%	0.3%	0.5%	0.3%
<b>Two or More Races</b>	1.3%	0.7%	2.5%	0.9%	1.3%	0.5%	1.5%	0.9%	1.8%	0.8%	5.9%	1.8%	3.1%	1.4%

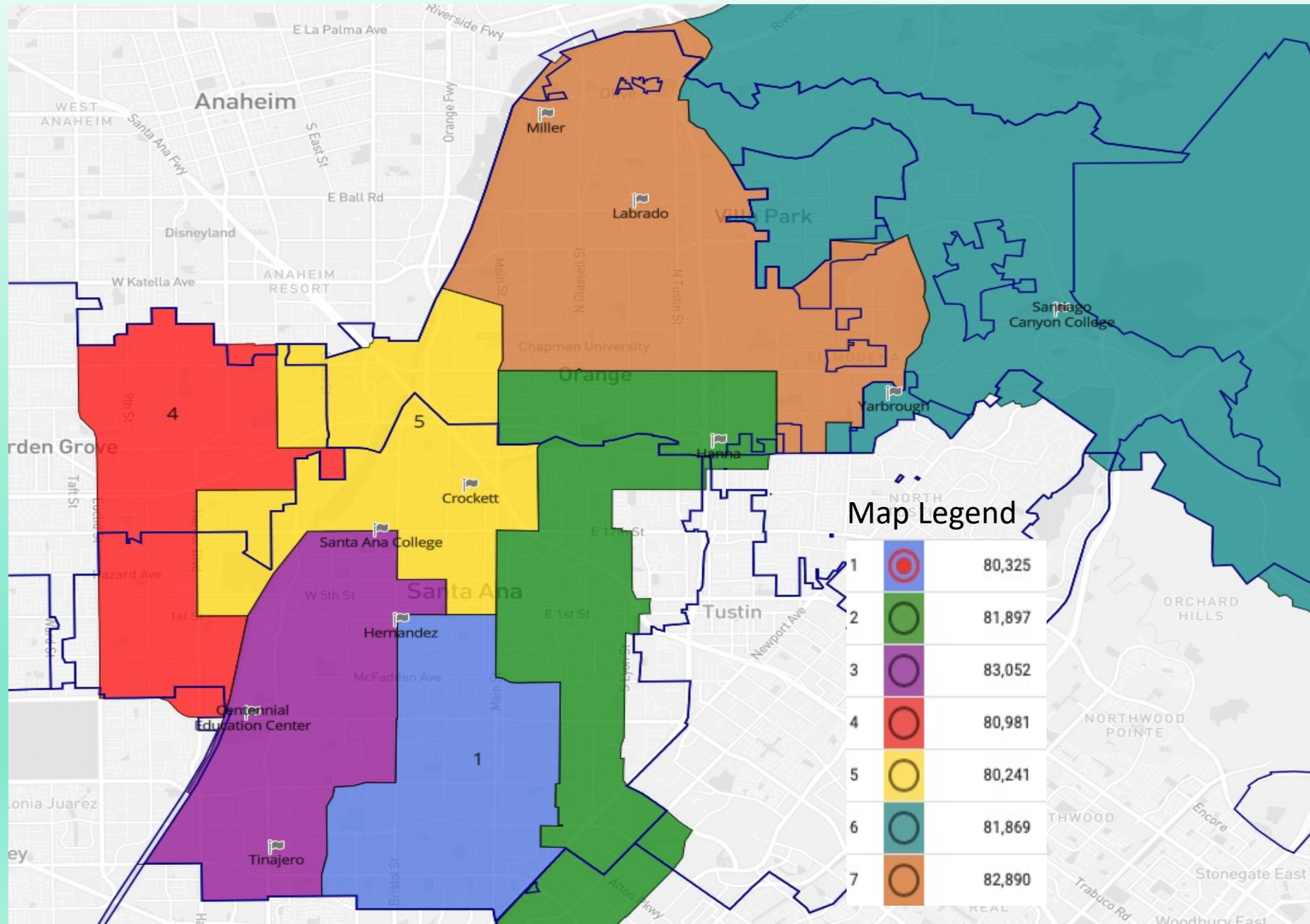
\* Source: Census 2020 P.L. 94-171 Redistricting Data Summary Files \*\* Source: American Community Survey, 2015-2019 Data

**RSCCD TRUSTEE AREA PLAN 2B  
ASIAN PLURALITY PLAN**

# RSCCD TRUSTEE AREA PLAN 2B



# RSCCD TRUSTEE AREA PLAN 2B



# RSCCD Trustee Area Plan 2B Demographics

**Population 571,255**

**Median 81,608**

**Deviation 3.5%**

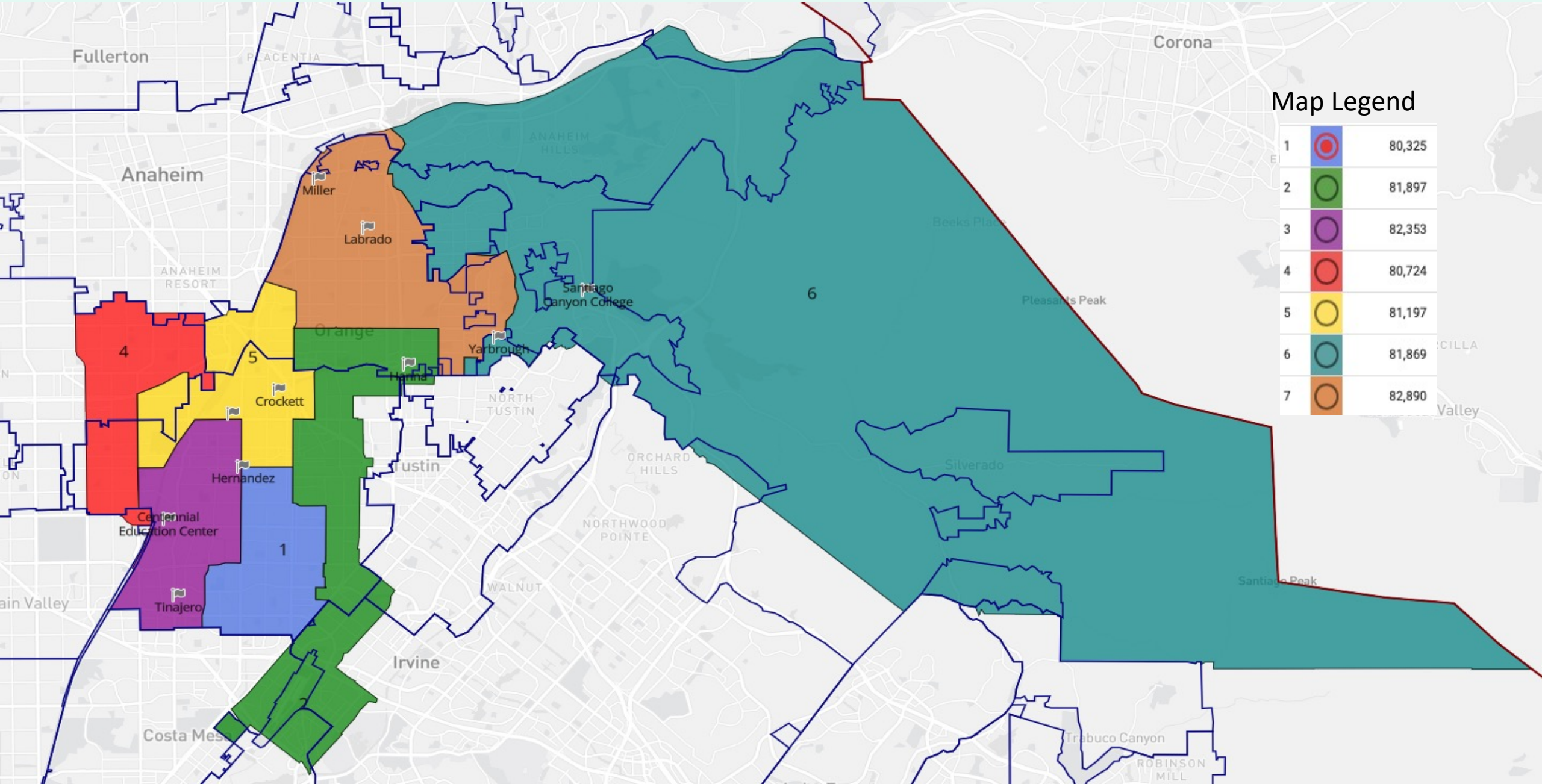
Trustee Area	TA 1		TA 2		TA 3		TA 4		TA 5		TA 6		TA 7	
<b>Population*</b>	80,325		81,897		83,052		80,981		80,241		81,869		82,890	
<b>Population Variance</b>	-1.6%		0.4%		1.8%		-0.8%		-1.7%		0.3%		1.6%	
<b>CVAP**</b>	43,643		45,320		39,680		49,042		46,335		61,149		53,025	
<b>TP and CVAP</b>	TP	CVAP	TP	CVAP	TP	CVAP	TP	CVAP	TP	CVAP	TP	CVAP	TP	CVAP
<b>Hispanic</b>	80.6%	70.7%	65.3%	45.8%	82.9%	71.1%	50.4%	40.0%	66.45	53.3%	17.2%	14.8%	47.5%	30.0%
<b>White</b>	8.7%	16.3%	21.7%	39.5%	5.3%	12.0%	9.6%	16.6%	15.0%	25.5%	54.5%	63.2%	36.6%	55.7%
<b>Asian</b>	7.6%	10.2%	8.4%	10.3%	8.4%	14.2%	37.0%	40.7%	14.4%	9.5%	20.2%	18.1%	10.4%	6.9%
<b>African American</b>	1.0%	0.9%	1.2%	2.5%	1.1%	2.1%	0.9%	0.7%	1.5%	2.1%	1.2%	1.85	1.4%	1.35
<b>Native American</b>	0.2%	0.2%	0.2%	0.4%	0.2%	0.2%	0.1%	0.2%	0.2%	0.2%	0.1%	0.1%	0.1%	0.1%
<b>Pacific Islander</b>	0.2%	0.7%	0.2%	0.3%	0.2%	0.2%	0.3%	0.2%	0.3%	0.4%	0.3%	0.1%	0.3%	0.4%
<b>Other Race</b>	0.3%	0.2%	0.3%	0.4%	0.3%	0.2%	0.3%	0.4%	0.4%	0.2%	0.6%	0.3%	0.5%	0.3%
<b>Two or More Races</b>	1.3%	0.7%	2.5%	0.9%	1.5%		1.3%	0.9%	1.8%	0.8%	5.9%	1.8%	3.1%	1.4%

\* Source: Census 2020 P.L. 94-171 Redistricting Data Summary Files \*\* Source: American Community Survey, 2015-2019 Data

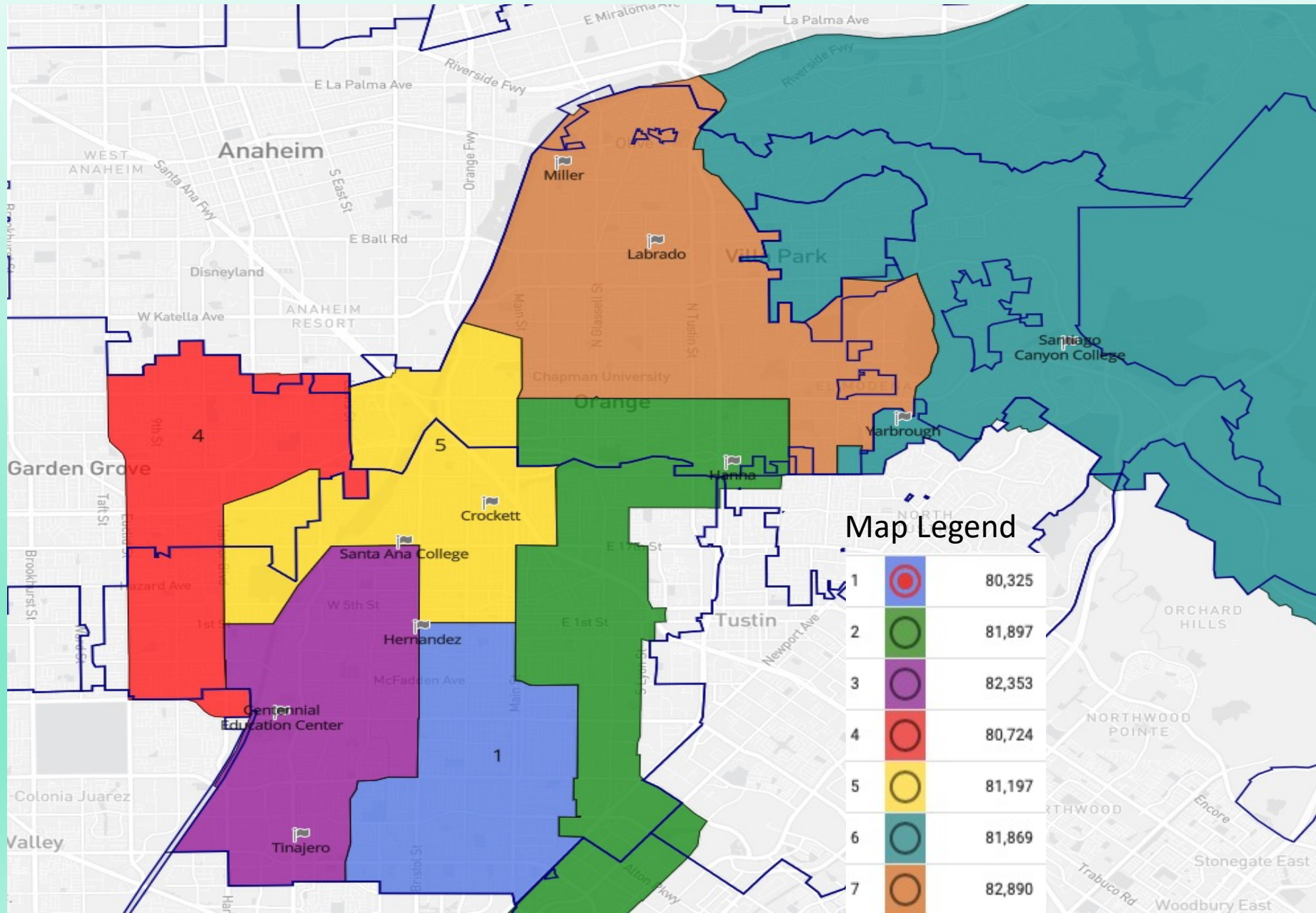


**RSCCD TRUSTEE AREA PLAN 2C  
ASIAN PLURALITY PLAN**

# RSCCD TRUSTEE AREA PLAN 2C



# RSCCD TRUSTEE AREA PLAN 2C



# RSCCD Trustee Area Plan 2C Demographics

**Population 571,255**

**Median 81,608**

**Deviation 3.2%**

Trustee Area	TA 1		TA 2		TA 3		TA 4		TA 5		TA 6		TA 7	
<b>Population*</b>	80,325		81,897		82,353		80,724		81,197		81,869		82,890	
<b>Population Variance</b>	-1.6%		0.4%		0.9%		-1.1%		-0.5%		0.3%		1.6%	
<b>CVAP**</b>	43,643		45,320		39,227		49,675		46,155		61,149		53,025	
<b>TP and CVAP</b>	TP	CVAP	TP	CVAP	TP	CVAP	TP	CVAP	TP	CVAP	TP	CVAP	TP	CVAP
<b>Hispanic</b>	80.6%	70.7%	65.3%	45.8%	83.1%	71.8%	49.7%	38.9%	67.0%	54.1%	17.2%	14.8%	47.5%	30.0%
<b>White</b>	8.7%	16.3%	21.7%	39.5%	4.5%	10.4%	10.3%	17.3%	15.0%	25.8%	54.5%	63.2%	36.6%	55.7%
<b>Asian</b>	7.6%	10.2%	8.4%	10.3%	9.0%	14.2%	36.9%	40.8%	13.9%	9.5%	20.2%	18.1%	10.4%	6.9%
<b>African American</b>	1.0%	0.9%	1.2%	2.5%	1.1%	1.9%	0.9%	0.8%	1.5%	2.1%	1.2%	1.85	1.4%	1.35
<b>Native American</b>	0.2%	0.2%	0.2%	0.4%	0.2%	0.2%	0.1%	0.2%	0.2%	0.2%	0.1%	0.1%	0.1%	0.1%
<b>Pacific Islander</b>	0.2%	0.7%	0.2%	0.3%	0.2%	0.2%	0.3%	0.2%	0.3%	0.4%	0.3%	0.1%	0.3%	0.4%
<b>Other Race</b>	0.3%	0.2%	0.3%	0.4%	0.3%	0.2%	0.3%	0.4%	0.4%	0.2%	0.6%	0.3%	0.5%	0.3%
<b>Two or More Races</b>	1.3%	0.7%	2.5%	0.9%	1.3%	0.5%	1.5%	0.9%	1.8%	0.8%	5.9%	1.8%	3.1%	1.4%

\* Source: Census 2020 P.L. 94-171 Redistricting Data Summary Files \*\* Source: American Community Survey, 2015-2019 Data